

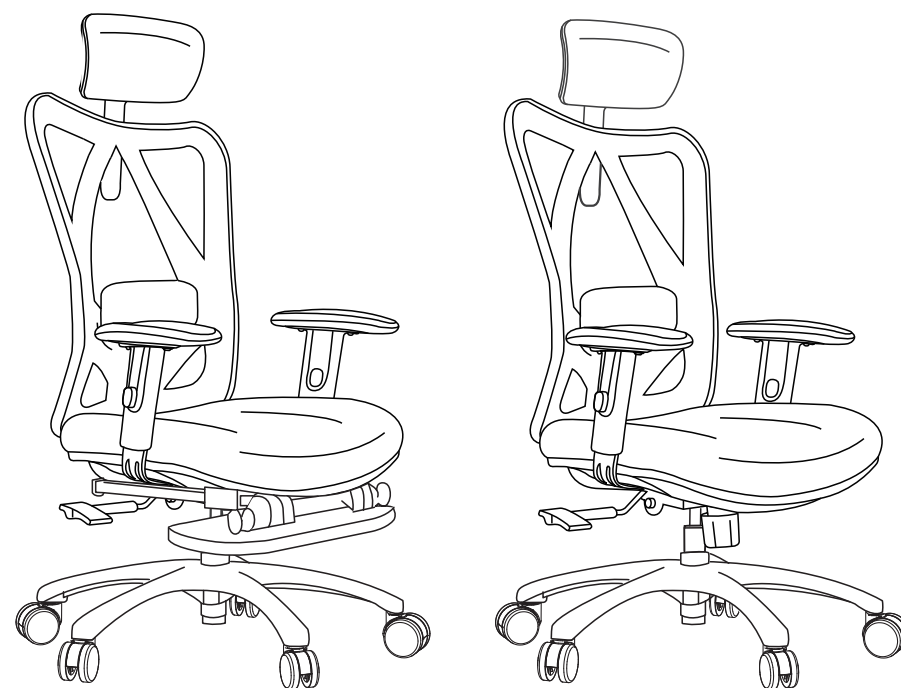


PRODUCT INSTALLATION GUIDE

M18-30 SERIES



Scan the code to watch the
product installation video



Product size: 68.5*72*110(131)CM

Company: Shenzhen Sihoo Intelligent Home Co., Limited

Address: Building #A, Yuyuan Industrial Park, Baoan District, Shenzhen City, Guangdong Province, China

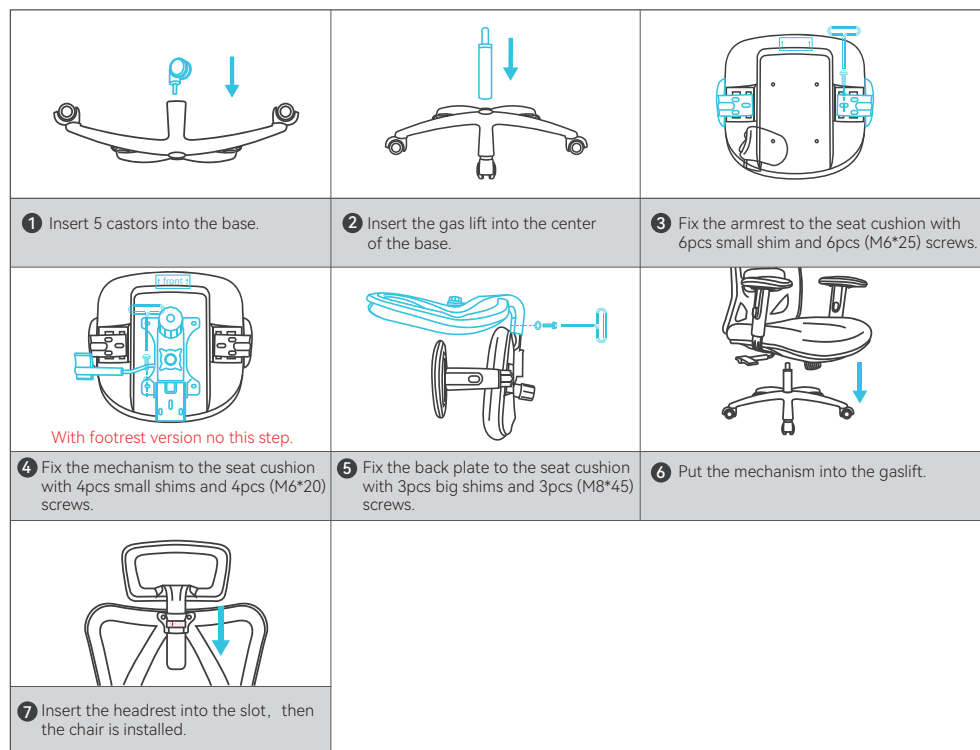
Manufacturer: FoShan Kezhimei Home Co., Limited

Manufacturer address: Jiujiang Town, Nanhai District, Foshan City, Guangdong Province, China.

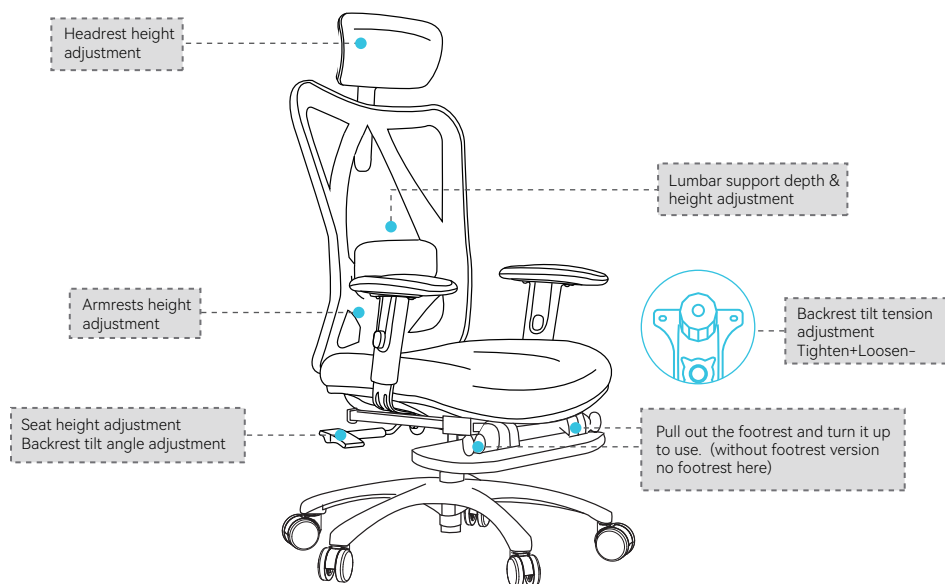
Company website: www.sihoo.com/en/

www.sihoo.com/en/

Assemble Introduction (The size will be according to regular measurements)



Functions (The size will be according to regular practice)



Installation Instruction

- Before installation, please read all the safety instructions below (drawings) carefully and master the installation steps and methods.
 - Counting the parts is complete or not, if there is any breakage.
 - To avoid injury, it is recommended that you wear gloves during installation.
 - Please choose a spacious and clean flat floor for installation, and then lay the paper sleeves on the ground, to avoid collision between components and the ground.
 - To avoid using the wrong screws, please fix all the screws before tightening them.
 - Please note that once the gas lift is installed, it is difficult to remove.
- If you need to disassemble the chair, such as moving, please gently tap the head of the gas lift with a rubber-tipped hammer several times, and then remove the base. after that, continue to gently tap the base, using the principle of vibration to make the gas lift fall off. Please be careful not to get hurt as tools are needed to do this. (Damage and accidents caused by this operation do not fall within the scope of product warranty, please careful operation.)

⚠️ Precautions For Use

- Please note that this product is designed for one person, one chair is for one person only.
- For the use of product features, please follow the instructions in the product features display.
- Make sure all screws and components are locked tightly before using this product and check it at least once every 3 months.
- Please use on the flat floor, avoid wet or fireworks places, avoid long time direct sunlight.
- Don't use sharp or hooked objects to scrape the chair and do not get it close to the fire.
- Not allowing the child under 5 years old to sit on the chair alone.
- Please don't sit on the armrest, stand on the chair or use it as a ladder or footsteps, in case cause some danger.
- To avoid any harm to your fingers don't insert them into the mechanism while sitting.
- For your safety, no disassembly to the gas lift is allowed.

Parts List (The size will be according to regular measurements; One more as a backup)

Universal parts			Optional parts	
			Without footrest version	With footrest version
Castors: 5pcs	Chair Base: 1pc	Gas lift: 1pc	Mechanism: 1pc	Seat cushion with footrest: 1pc
Armrest: 1pair	Seat Back: 1pc	Headrest: 1pc	Seat cushion: 1pc	
Hex wrench: 1pc	small shim: 6+1pcs	Big shim: 3+1pcs	Small shim: 4 pcs	
Armrest screw (M6*25): 6+1pcs	Back plate screw (M8*45): 3+1pcs		Mechanism screw (M6*20): 4+1pcs	
0 1 2 3 4 5 6 7 8 9 10 cm				

Note: Before installation, pls classify the screws, measure the screws lengths to easy assemble.